



 **SYMBIO**
PROJECT & CONSTRUCTION MANAGEMENT

www.symbioet.com

info@symbioet.com

<https://www.linkedin.com/company/symbio-pcm>



WHO ARE WE?

SYMBIO Project and Construction Management is established with the vision to be leading specialized project management consulting firm, which will meet the highest standards of quality through unleashing cutting-edge construction project management approaches and techniques.

The rationale for SYMBIO is primarily based on the extensive experiences of the partners working comprehensively with local and foreign companies delivering a variety of projects, which demanded project management knowledge and skills. Such specialized project management knowledge does not often exist locally or are not practiced well at least. Moreover, while construction sector is booming in Ethiopia, Clients are demanding for companies who are capable of offering comprehensive project management services with the given project constraints: Scope, Cost, Time, and Quality.

Taking a note of such challenges and opportunities, the partners-who have worked many years on specific areas of project & construction management-have joined their hands, endeavors to bring together years of experiences, knowledge, and skills and passions into the Ethiopian construction arena.

The partners of SYMBIO have all the necessary ingredients to bring forth project deliverable and believe that they are the first of a new generation of project management companies in Ethiopia. In view of the above, SYMBIO strongly believes that your project will snugly fit to Client's requirements.

We have delivered many projects of different scales and categories: hotels, apartments, factories, mixed uses, offices, embassies, mall, real estate, and diplomatic residence. We have immense multicultural experiences since we have worked with people from different walks of life.

We have seen your challenges before and we believe it is us who you are looking for.



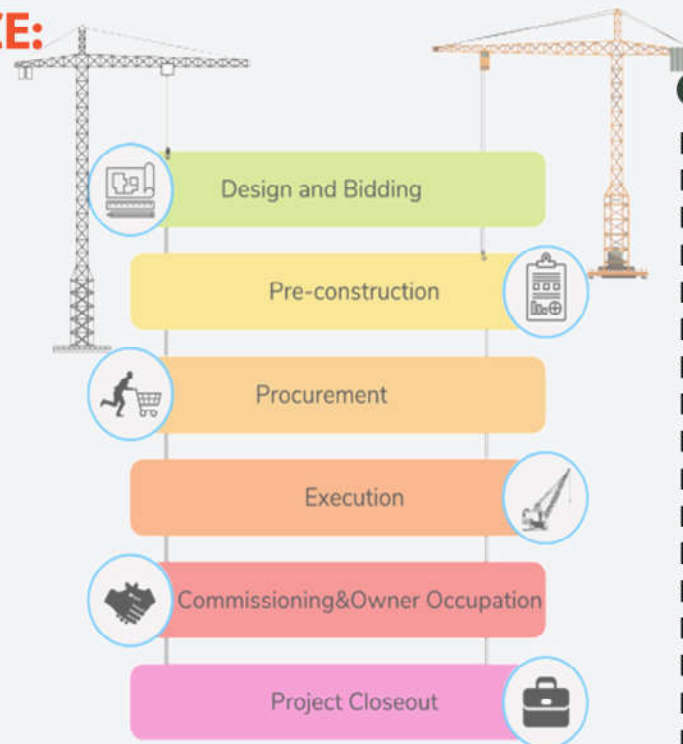
WHY SYMBIO?

- ✓ We can see “around corners”;
- ✓ We have top-tier relationships with corporate and professional clients;
- ✓ We deploy exceptional professional & technical expertise;
- ✓ We have hand-on construction knowledge across the various sectors;
- ✓ We maintain strong Stakeholder relationships, especially with the client;
- ✓ We have entrepreneurial culture with flexible teams;
- ✓ We have a team of seasoned managers and energetic engineers;
- ✓ We have rich experience in national & international construction arenas;
- ✓ We have physical and live project testimonies;
- ✓ Symbio’s Project Managers have seen & felt your challenges before.

BRIEF SCOPE OF THE SERVICE:

Pre-Construction Phase

- ✓ Project Development
- ✓ Design Management
- ✓ Construction Planning
- ✓ Scheduling
- ✓ Tender Management
- ✓ Division of Work and Trade Contracts



Construction Phase

- ✓ Planning & Executing Mobilization & Startup
- ✓ Kickoff and Project Meetings
- ✓ Construction Progress Monitoring & Evaluation
- ✓ Handling Project Procedures
- ✓ Contract and Claim Management
- ✓ Communication Management
- ✓ Risk Management
- ✓ Procurement Management
- ✓ Cost Management
- ✓ Quality(QA/QC) management
- ✓ Scope Management
- ✓ Integration Management
- ✓ Work Inspection and Supervision
- ✓ Payment Assessment & Certification
- ✓ Project Substantial Completion
- ✓ Project Final Completion
- ✓ Maintenance Period Certification (Defect Liability)

SYMBIO'S MAJOR PROJECTS

HOTELS

- ☑ Radisson Addis Hotel, Sanbird Development Plc
- ☑ Crowne Plaza Addis for IHG Hotel Groups , Owner Tsemex Hotel Plc
- ☑ Ramada Addis Hotel for WINDHAM Hotel Groups, Owner ADM Business plc
- ☑ Sofitel Addis Hotel & Residence, Semu Real Estate Development
- ☑ Dusit Hotels & Resorts, Fre-Tsega Developers
- ☑ Kidus Hotel and Resorts Plc G+13 Apartment & Office Building Project
- ☑ Nexus Hotel Extension Building Project, Dag Trading Plc

APARTMENTS

- ☑ Dh One Real estate, US Embassy Diplomatic Apartment Building(high-end)
- ☑ Amibara Real Estate, Amibara Properties Holdings
- ☑ Eagle Hills, Central Core Project
- ☑ Mieyona Apartment Building, Mieyona Real Estate
- ☑ Conari Apartment, Addis CG Development
- ☑ Kidist Luxury Apartment

MISCELLANEOUS

- ☑ H&M Hennes & Mauritz Office Building
- ☑ Dagi Plc G+15 Apartment & Office Building Project
- ☑ National Tobacco Ethiopian Owner Japan Tobacco International
- ☑ Royal Foam Factory Warehouses and Office Building
- ☑ Dag Trading Plc Warehouse Project
- ☑ Specialized Pediatric Clinic Building Project for International Crisis Aid

EMBASSIES

- ☑ Swiss Embassy Chancellery and Residence Building
- ☑ Namibian Embassy Renovation & Remodeling Project



PROJECT & CONSTRUCTION MANAGEMENT



DH ONE REAL ESTATE, US DIPLOMAT RESIDENCE

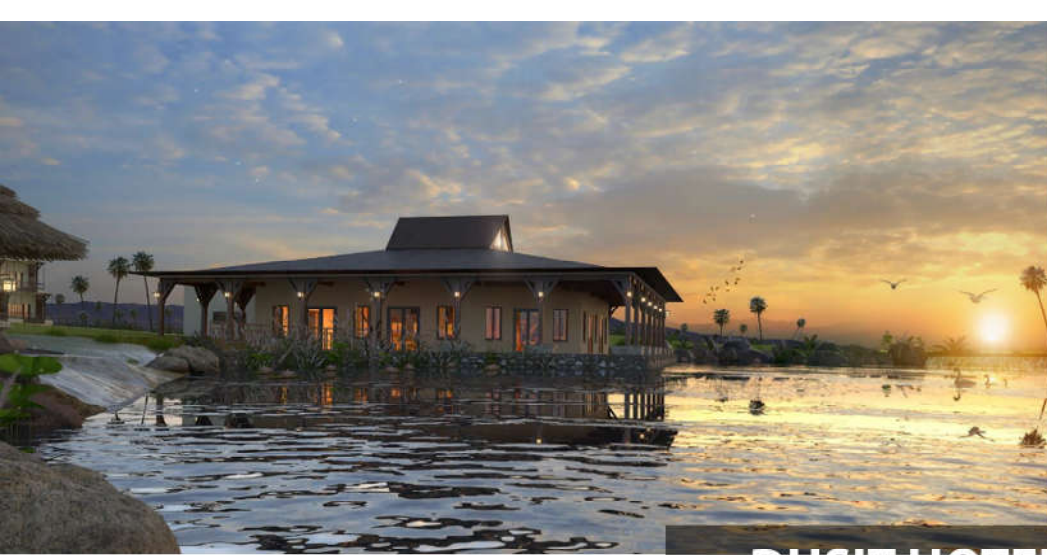




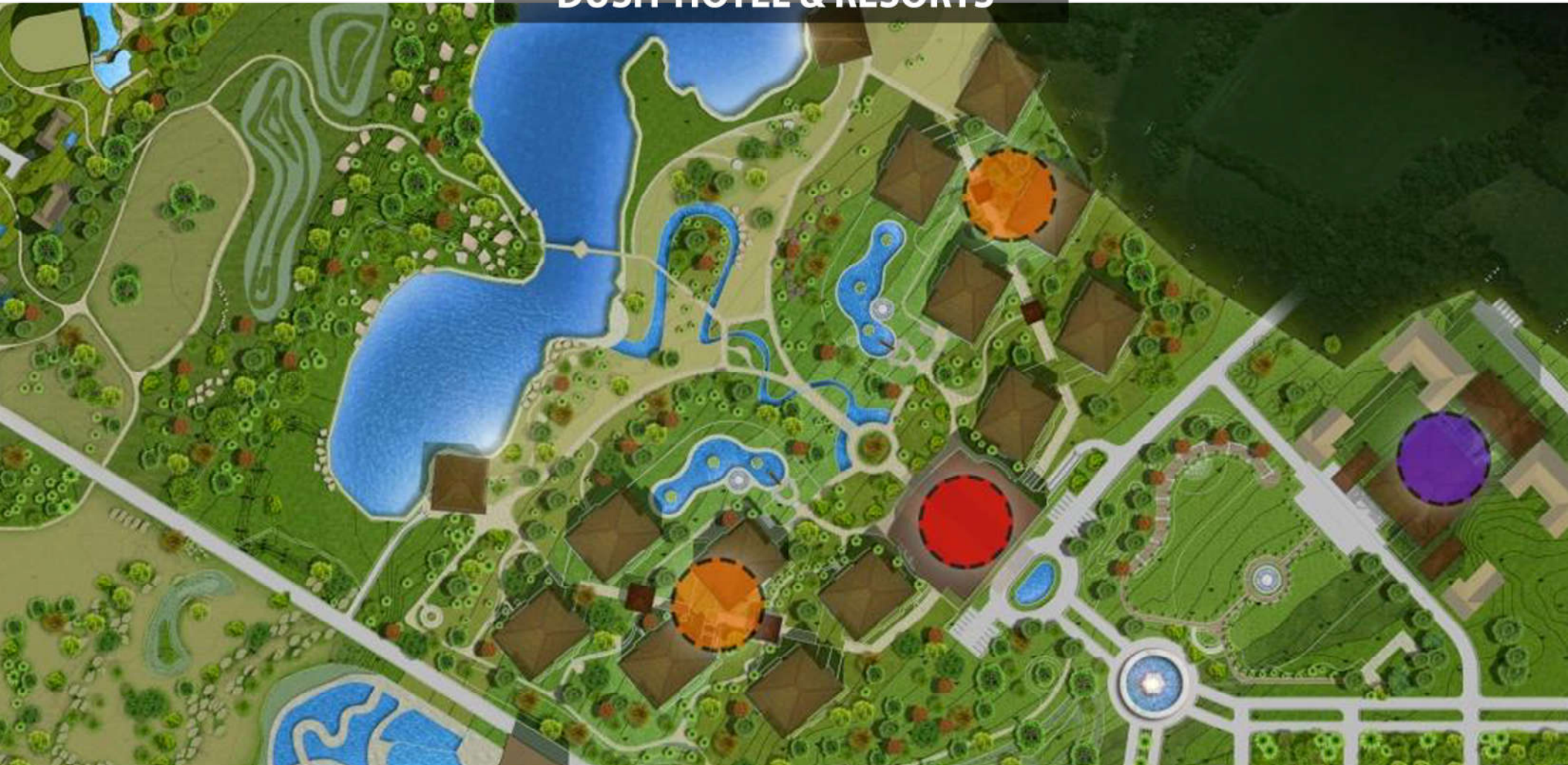
RAMADA HOTEL



SEMU REAL ESTATE



DUSIT HOTEL & RESORTS





AMIBARA PROPERTIES, CITY CENTER PROJECT



NAMIBIA EMBASSY



SWISS EMBASSY



lg
LA GARE



LA-GARE CENTRAL CORE PROJECT, EAGLE HILLS





RADDISON ADDIS HOTEL



JAPAN TOBACCO INTERNATIONAL , CANTEEN & GUESTHOUSE



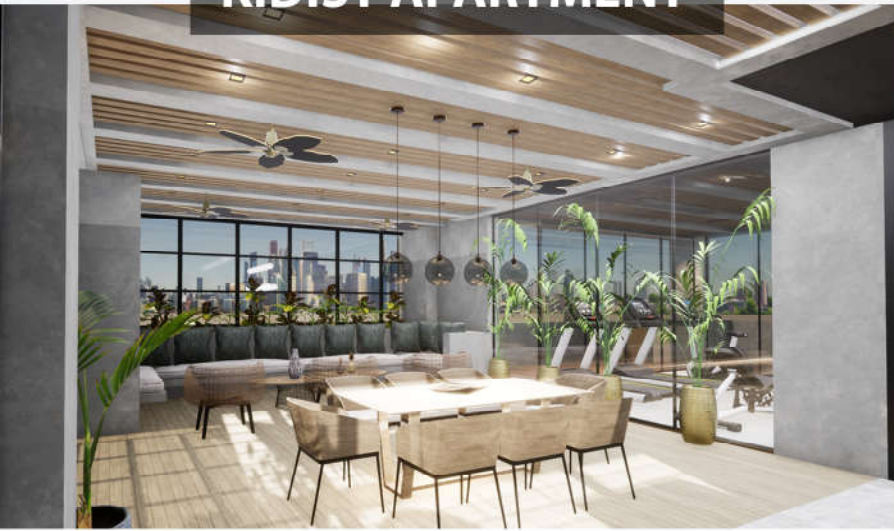
**JAPAN TOBACCO INTERNATIONAL
BRANDING PROJECT**



H& M BRANDING PROJECT



KIDIST APARTMENT



AMBASSADOR MALL





CONARI APARTMENT



RADISSON DJIBOUTI

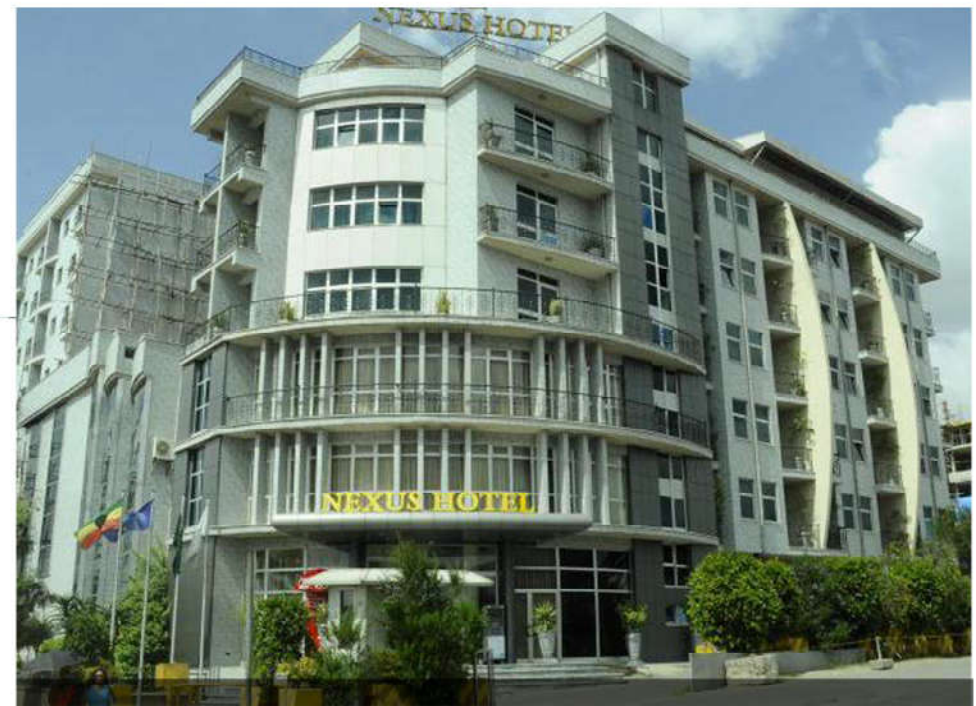




PARKINN RADISSON DJIBOUTI



CROWN PLAZA



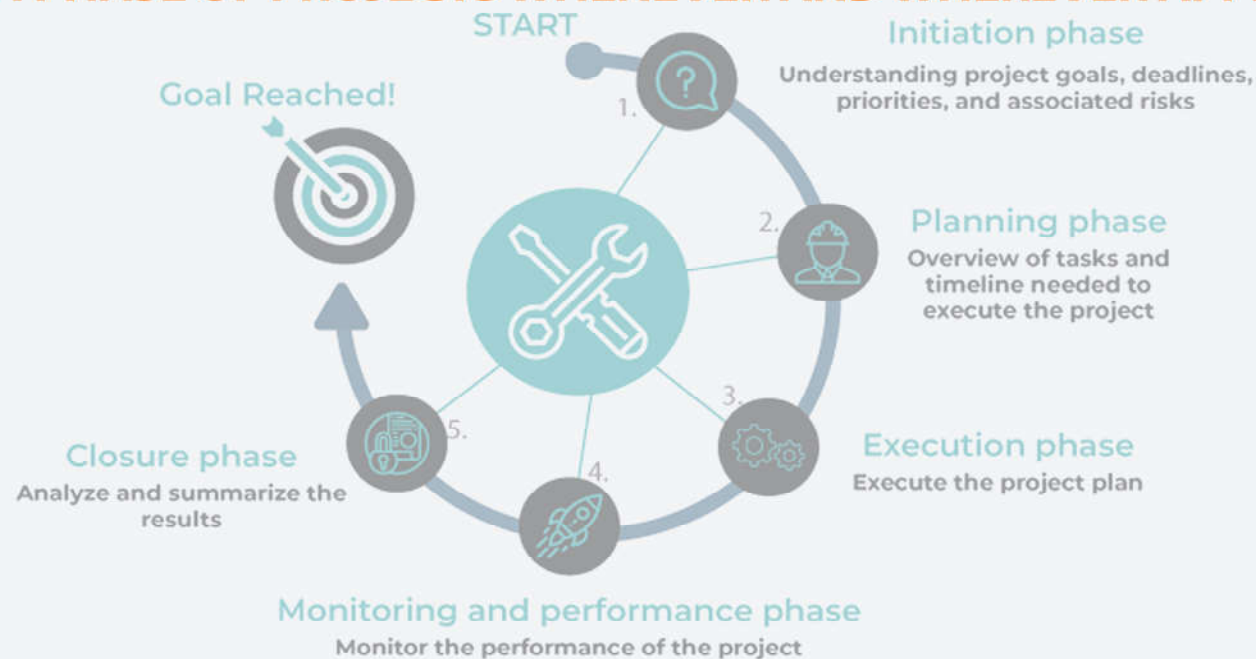
NEXUS HOTEL EXPANSION PROJECT

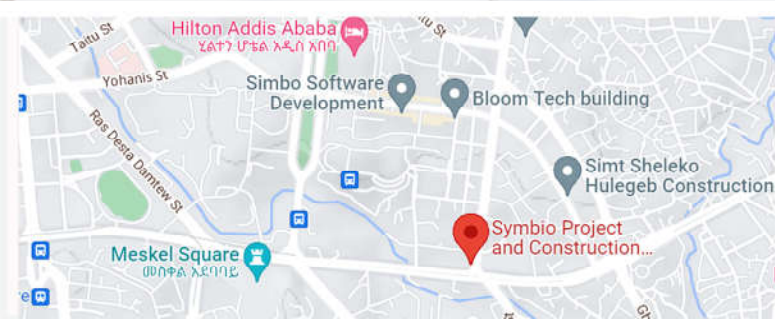


EAST AFRICA OFFICE RENOVATION PROJECT



**SYMBIO APPLIES EACH PROJECT MANAGEMENT BODY OF KNOWLEDGE (PMBOK)
TO EACH PHASE OF PROJECTS WHENEVER AND WHEREVER APPLIES TO**





SYMBIO

PROJECT & CONSTRUCTION MANAGEMENT

Email: info@symbioet.com Phone: (+251)-011-833-2280
Website: symbioet.com Mobile: (+251)-091-179-2714
(+251)-093-003-4230